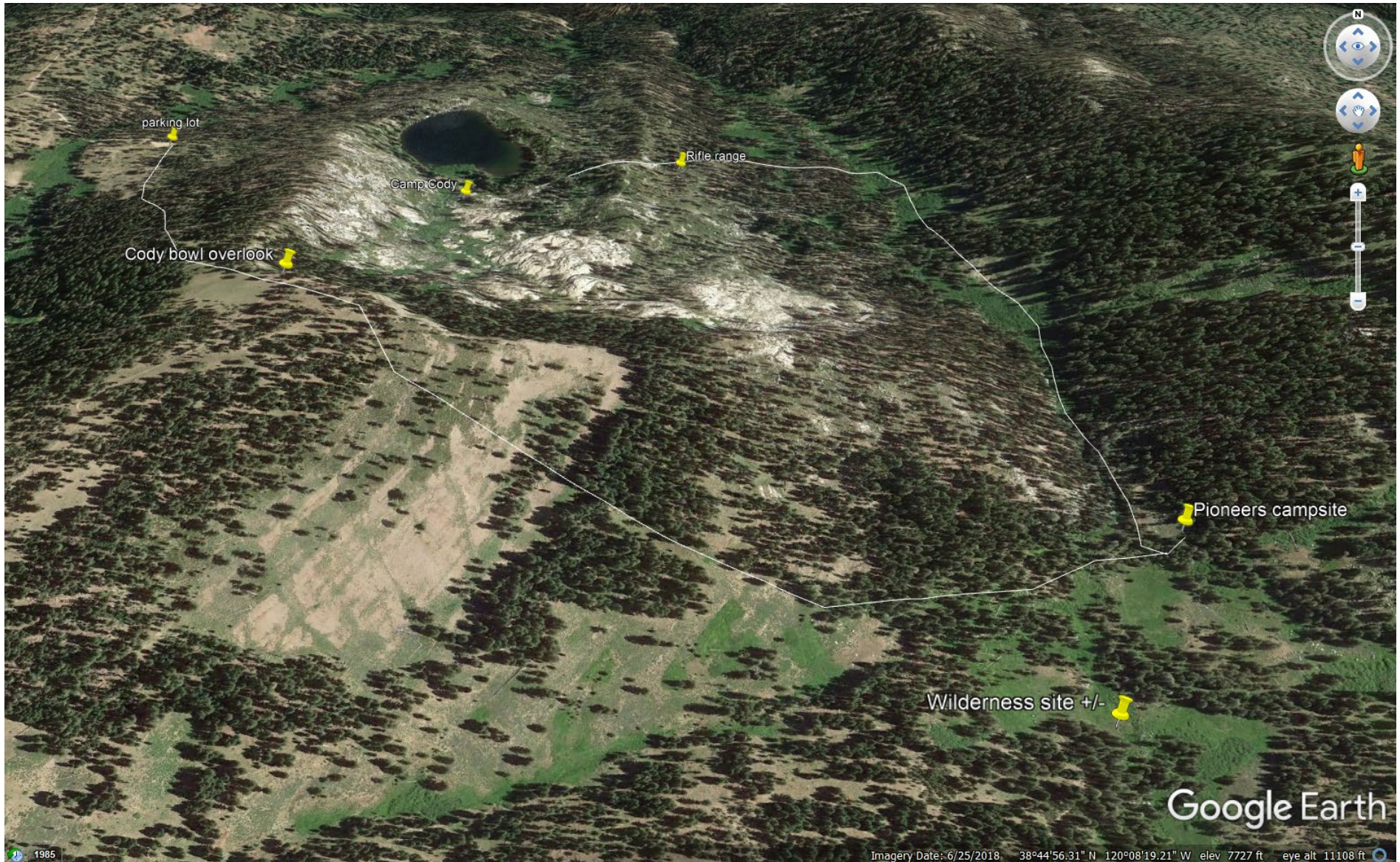


Cody Pioneers and Wilderness Survival campsites at Cody Meadows



Hiking directions from Camp Cody (38.759, -120.143) to **Cody Meadows** campsite (38.750, -120.131) for Cody Pioneers and the general location of the Wilderness Survival merit badge campsite.

Hiking directions: The Pioneers hike **out** of camp past the rifle range and intersect Cody Creek near the jeep trail. There should be a wooden post trail marker on the west side of the creek upslope near a tree somewhat hidden from view as one approaches the creek from the west (rifle range). The trail along the creek is a gradual elevation climb of about **500 feet** and occasionally crosses the creek (seasonally dependent). The trail is roughly **1.1 miles** from the volleyball court in camp to the traditional Cody Pioneers campsite at Cody Meadows.

The trail to **return** to camp going in a westerly direction is marked, albeit not very accurately, as the trek leaders have several routes to choose from, all generally ending at the parking lot. If trek leaders choose to take the Pioneers to the Cody Lake overlook, make sure a responsible person does “traffic control” so that the Scouts do not get too close to the edge of the rock bowl.

NOTES: The Wilderness Survival merit badge scouts also camp at Cody Meadows, choosing from several sites further south in the meadow away from the Pioneers. These scouts may choose to trek to the meadows along the same route as the Pioneers but usually they take a “shortcut” climbing up over the ridge in the vicinity of the Red Fir and Mosquito Gulch campsites. They also vary their return route to camp from year to year.



Cody ~7250 ft.

creek ~ 7050 ft.

Pioneers site ~ 7560 ft.

ridge ~ 7310 ft.